

Summer, 2007



Cycling and Hiking in Orhaniye

Chris Cummins



There are lots of paths and disused roads around the Orhaniye area which make for some ideal cycle trails, or for a walk. Here are five routes that I have enjoyed and documented. Feel free to experiment and send your own suggestions to chrisc.101@gmail.com.

TIPS

- If walking, take a good pair of sturdy shoes. If cycling, take a puncture repair kit!
- Take a minimum of 1 litre of water.
- Set off early to avoid the heat of the sun, and avoid peak traffic times if travelling on the roads, particularly if you are on a bike.
- For some nice holiday photos, take a camera.
- The dirt paths around the hills provide a good place to collect pinecones for fire kindling, useful if you are having a barbeque.



The Water Tower

BIKE or WALK	
DISTANCE	1.5km
DIFFICULTY	Very Easy

A simple there-and-back 75 vertical feet trundle up to the local water tower, providing a good birds eye view over Keçibükü and making an ideal late-afternoon walk.



Keçibükü Loop

BIKE or WALK

DISTANCE

DIFFICULTY

5km

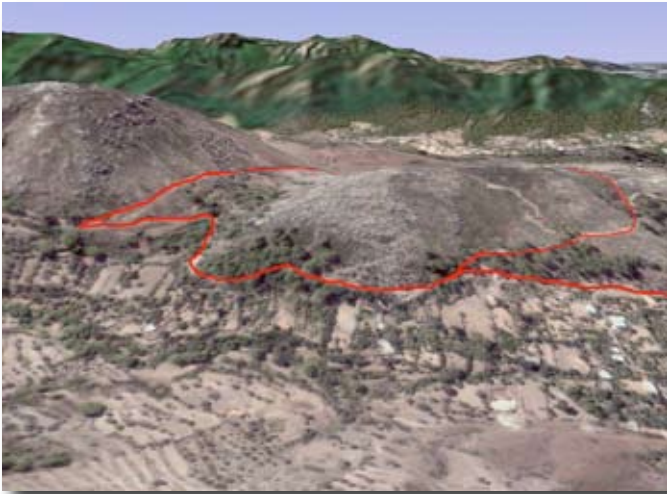
Medium-Difficult

A loop around the hills of Keçibükü which, while being short, is deceptively challenging, with sharp inclines and descends over loose rocky grounds. The loop can be reversed for a new challenge.

1



2



3



“With daytime temperatures in excess of 40°C, remember to take plenty of water.”

4



“The bees are not a problem providing they are left alone.”



5



1



2



Orhaniye Hill Climb

BIKE or WALK

DISTANCE

13km (foot), 14km (bike)

DIFFICULTY

Medium (foot), Medium-Difficult (bike)

The sister route to the Hisarönü Hill Climb, the Orhaniye Hill Climb begins with a fairly steep climb up over the back of Keçibükü, followed by nice views over Orhaniye. A very steep descent ensues, finally reaching Orhaniye before heading back to Keçibükü along the roads.

3



Hisarönü Hill Climb

BIKE or WALK

DISTANCE

14km

DIFFICULTY

Medium

A long and easy climb leads followed by a lengthy downhill trek with views over Hisarönü, finally reaching Hisarönü and heading back to Keçibükü along the roads.

1



2



3





“There are plenty of roadside cafés which you can stop at for drinks, snacks and a rest. The staff are always friendly and will welcome you with a smile.”

4



5





NOTE: This is a very long route which may take many hours to complete. Take lots of water and set off very early in the morning to avoid the heat of the day.

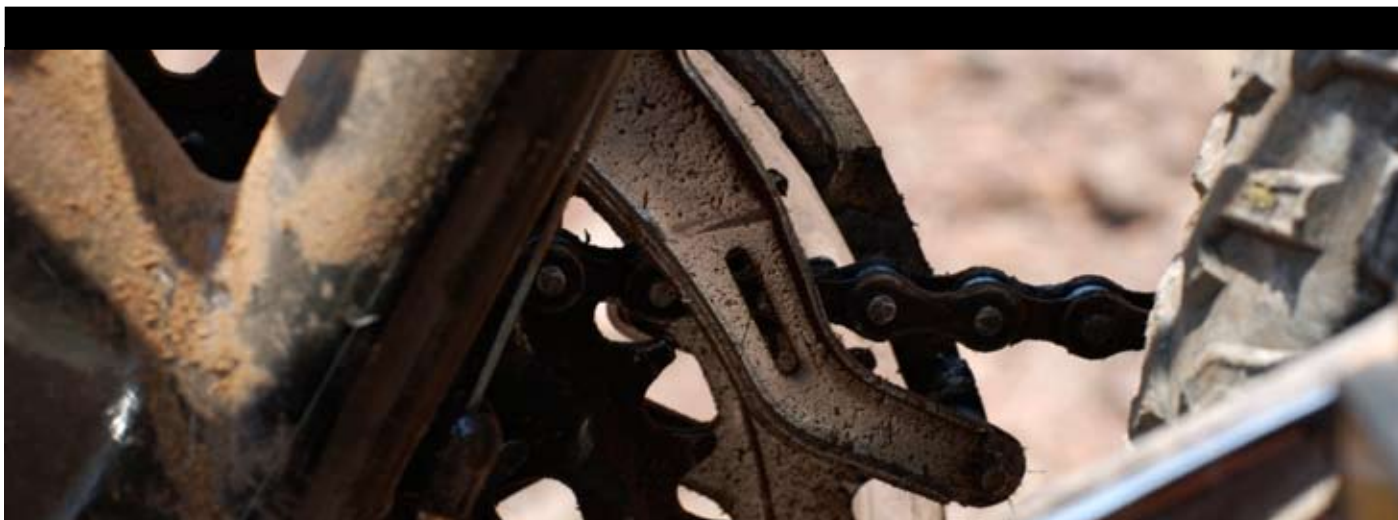
The Temple Route

BIKE or WALK

DISTANCE 21km

DIFFICULTY Hard-Very Hard

A long trek that takes you 1000 vertical feet into the hills around Hisarönü, following windy dirt paths that lead into a long sweeping descent into the outskirts of Hisarönü. The Hisarönü Hill Climb is then reversed, resulting in another tiring climb and the inevitable descent, backtracking your steps from earlier to lead you back to Keçibükü.



2



3



4



Created 09/08/07 by Chris Cummins.
All routes start and end at Villa Nurtan. For information, visit <http://www.villanurtan.com/>.
Please email questions, comments and suggestions to Chris Cummins. chris.c.101@gmail.com.
<http://www.orhaniye.net/>